

A

B

C

D

E

F

G

H

I

J

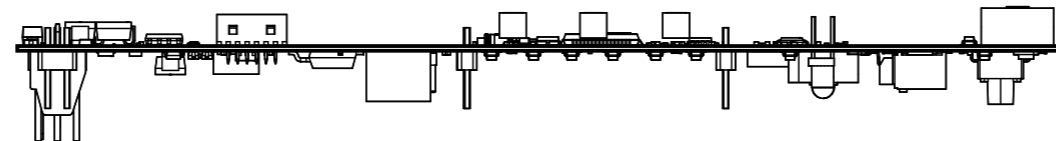
K

L

1

1

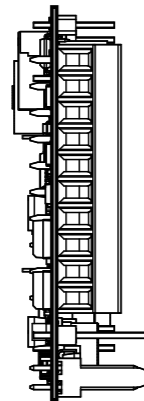
View from Back side (Scale 1:1)



2

2

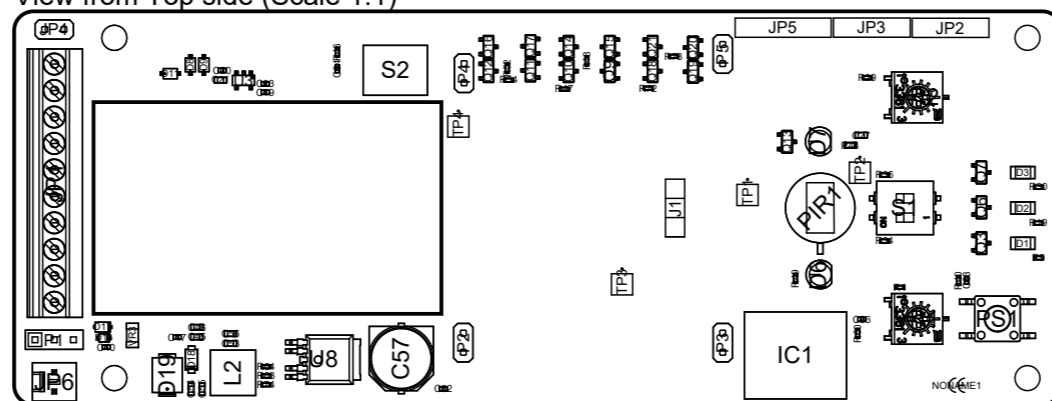
View from Left side (Scale 1:1)



3

3

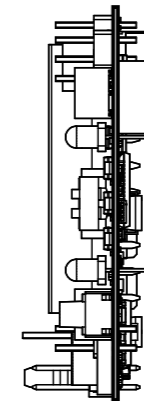
View from Top side (Scale 1:1)



4

4

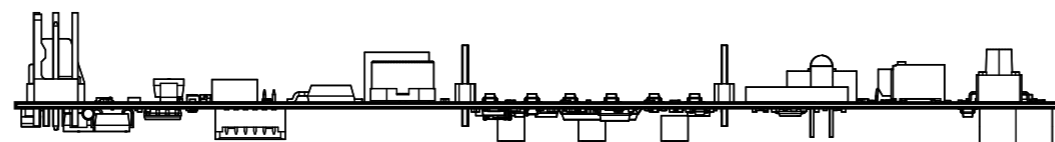
View from Right side (Scale 1:1)



5

5

View from Front side (Scale 1:1)



6

6

7

7

8

8

A

B

C

D

E

F

G

H

I

J

K

L

A

B

C

D

E

F

G

H

I

J

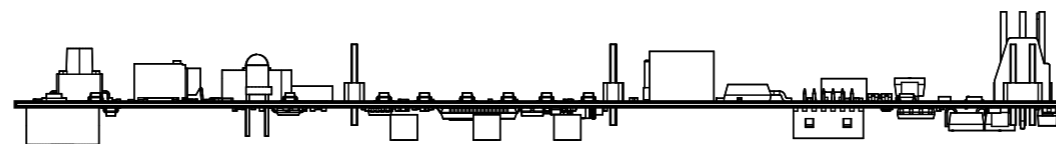
K

L

1

1

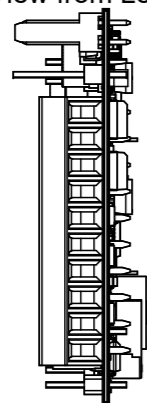
View from Back side (Scale 1:1)



2

2

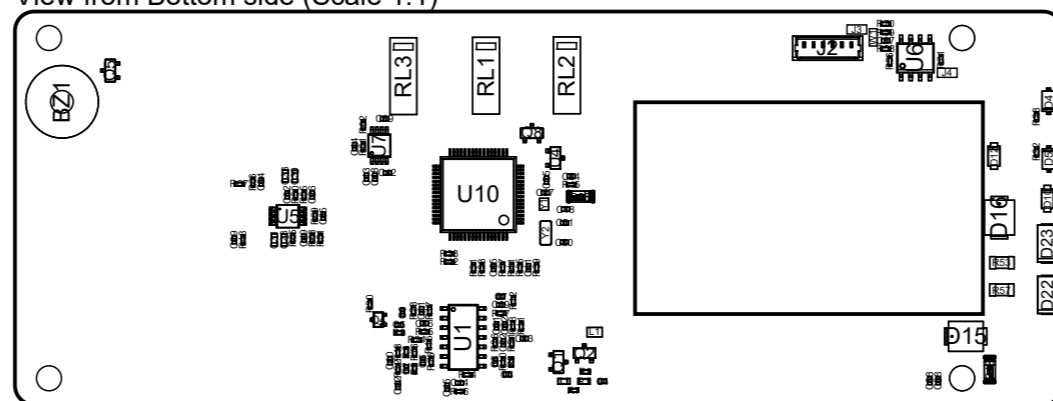
View from Left side (Scale 1:1)



3

3

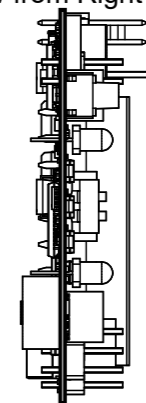
View from Bottom side (Scale 1:1)



4

4

View from Right side (Scale 1:1)



5

5

View from Front side (Scale 1:1)



6

6

7

7

8

8

A

B

C

D

E

F

G

H

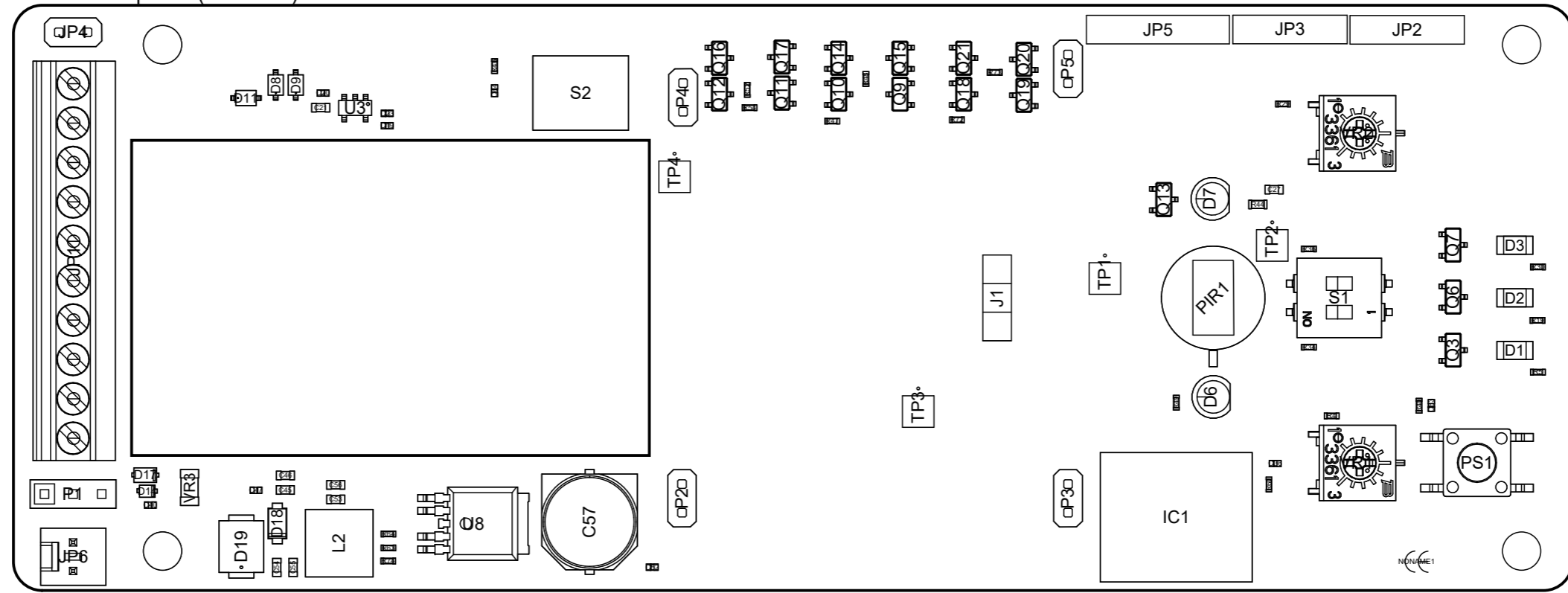
I

J

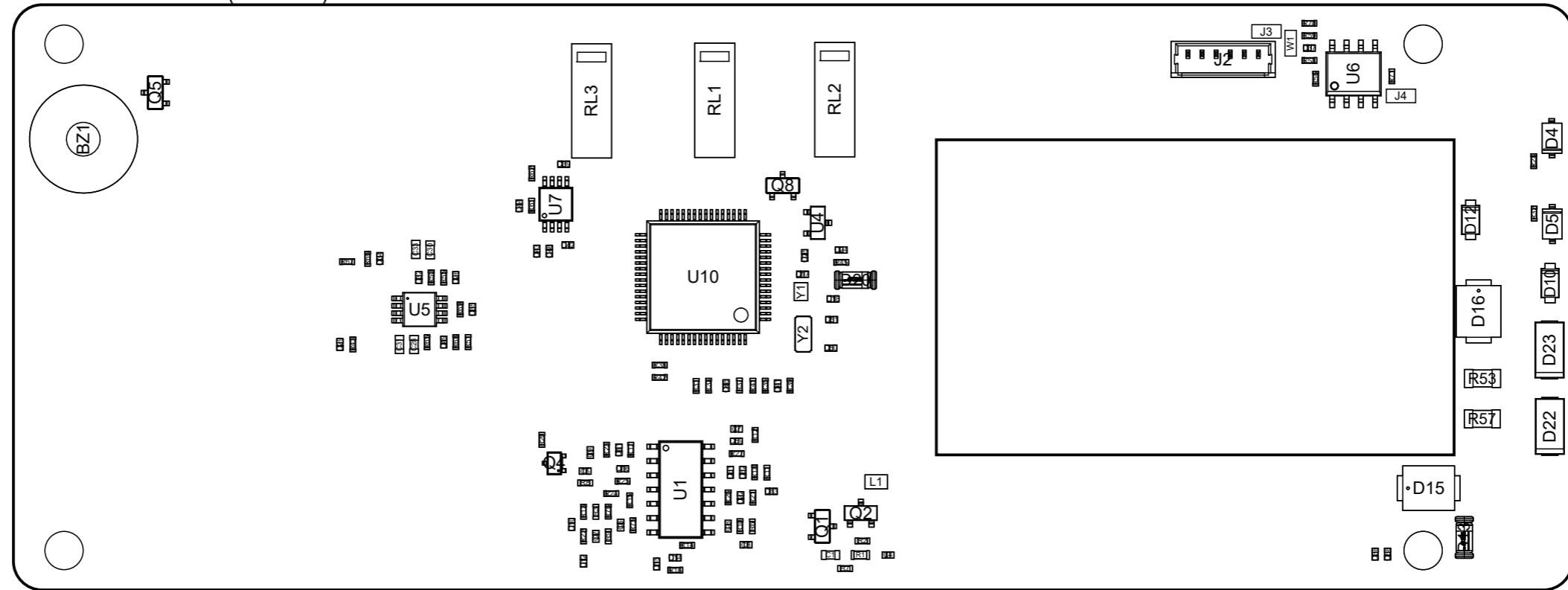
K

L

View from Top side (Scale 2:1)



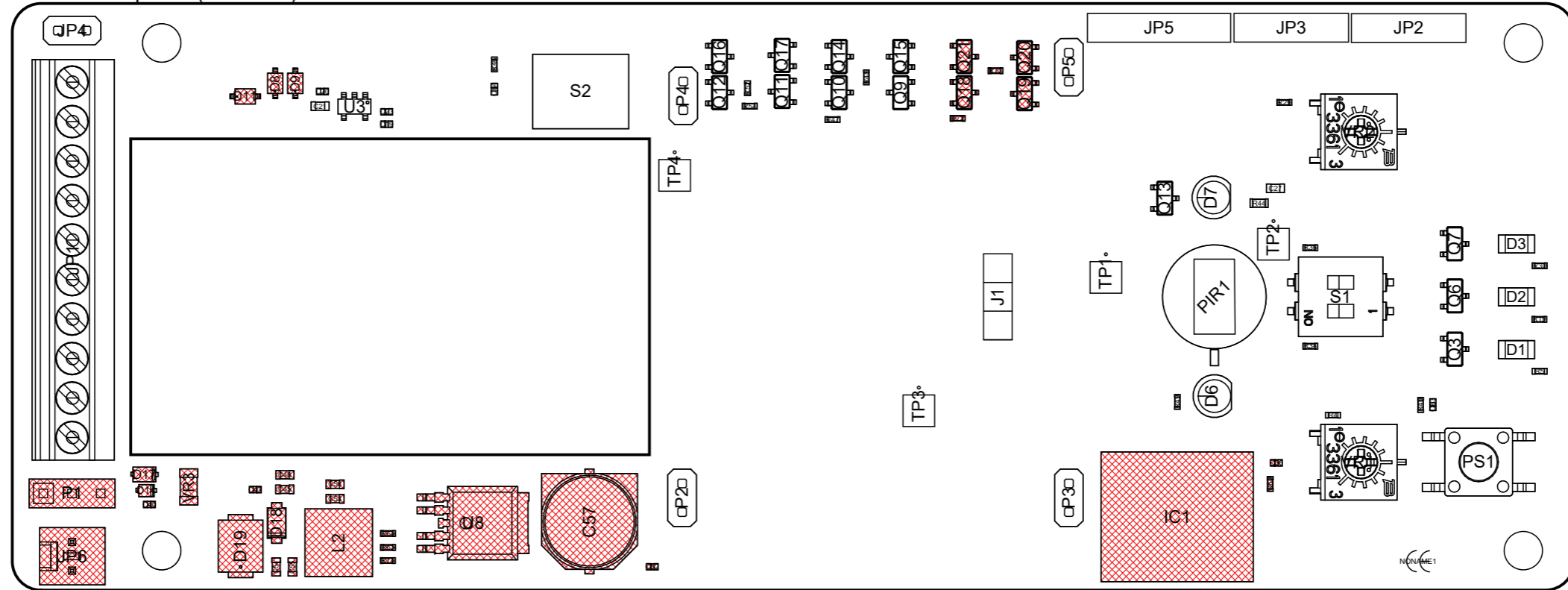
View from Bottom side (Scale 2:1)



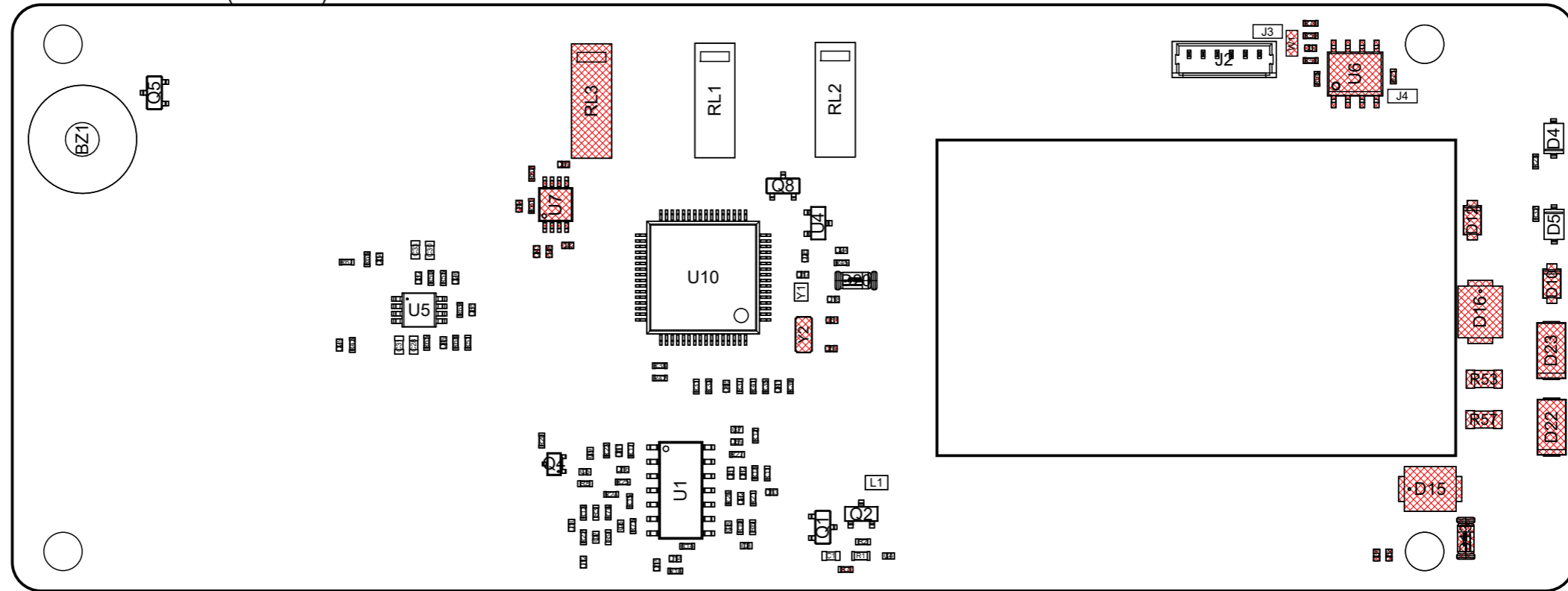
NO VARIATIONS

A B C D E F G H I J K L

View from Top side (Scale 2:1)



View from Bottom side (Scale 2:1)



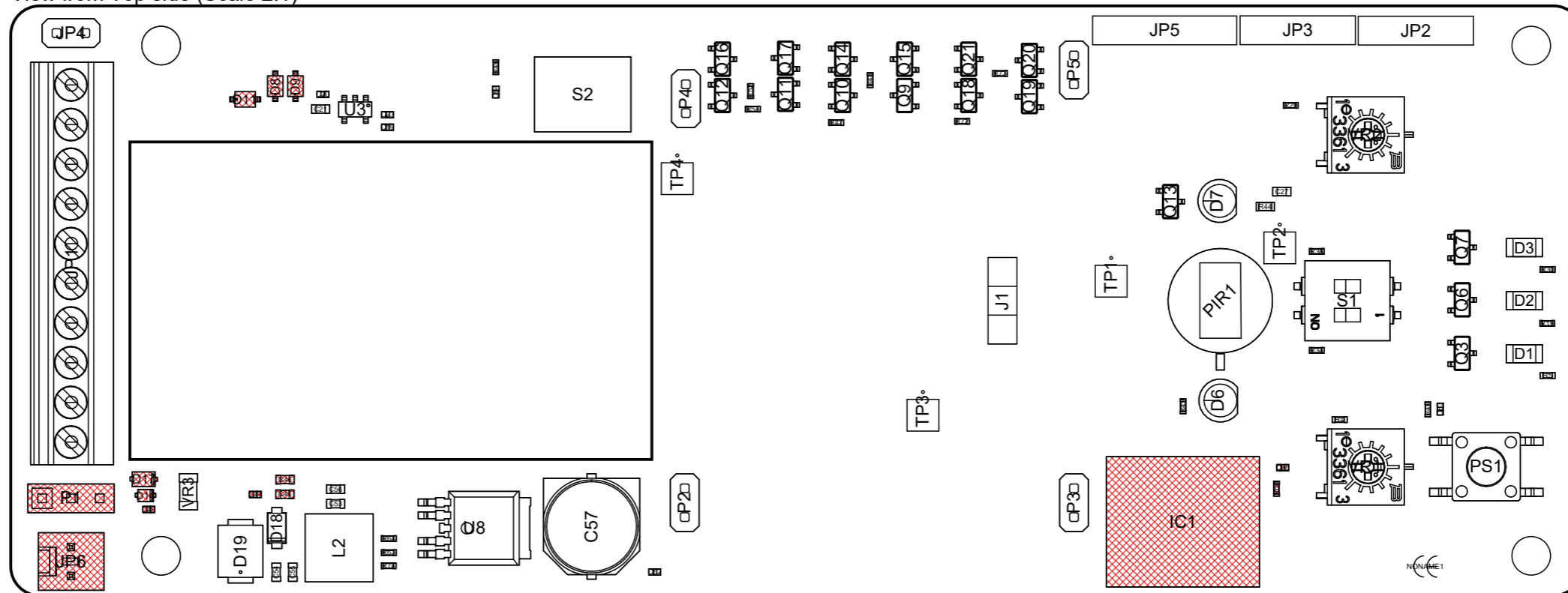
VARIANT "BASE"

A B C D E F G H I J K L

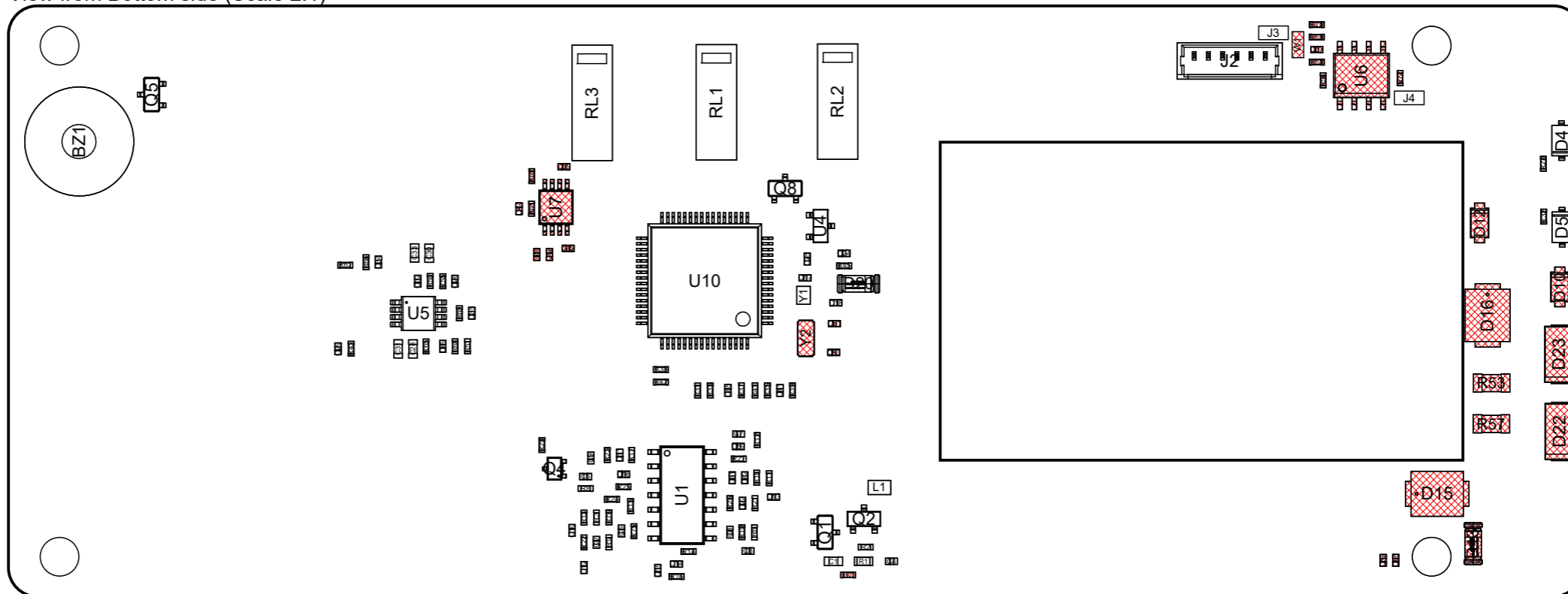
1
2
3
4
5
6
7
8

1
2
3
4
5
6
7
8

View from Top side (Scale 2:1)

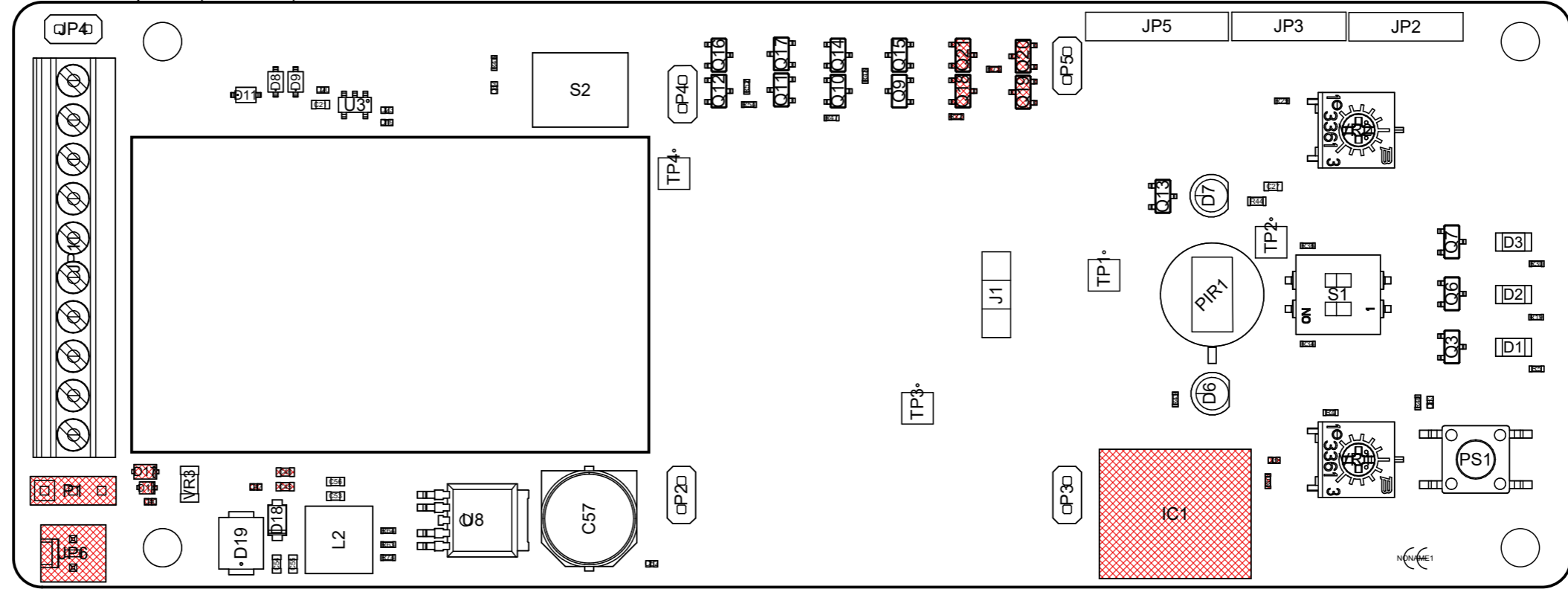


View from Bottom side (Scale 2:1)

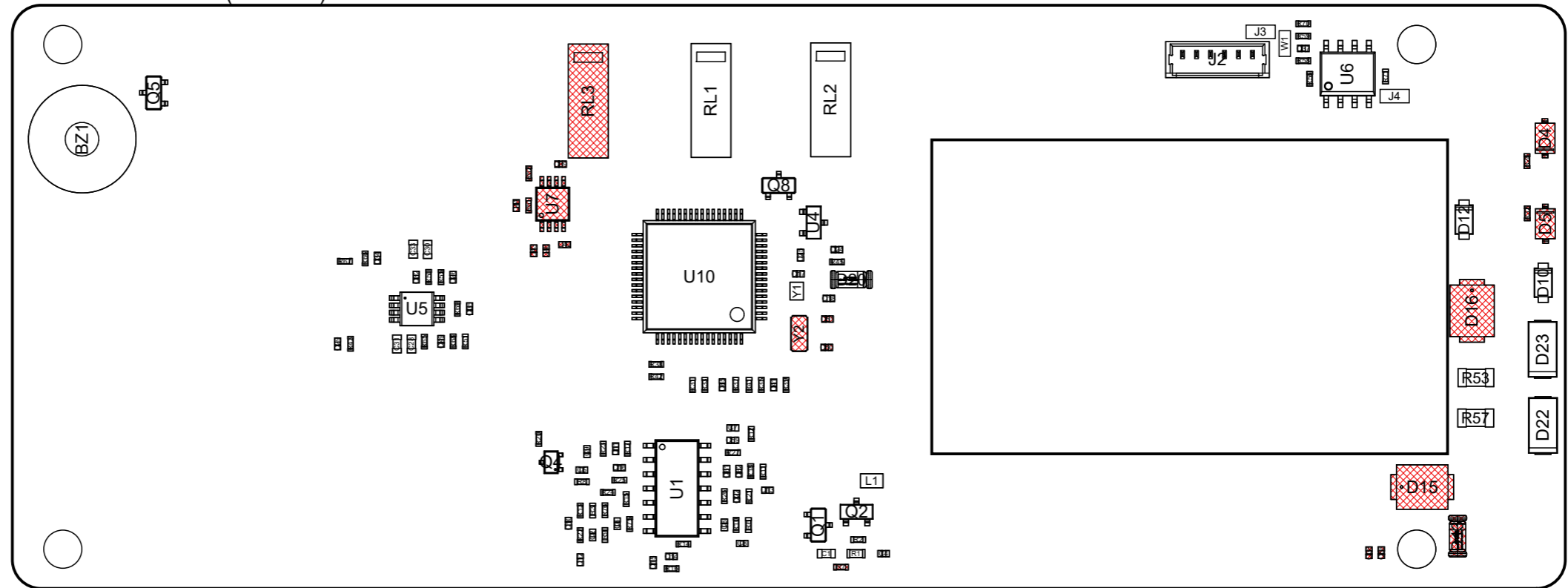


VARIANT "12V"

View from Top side (Scale 2:1)

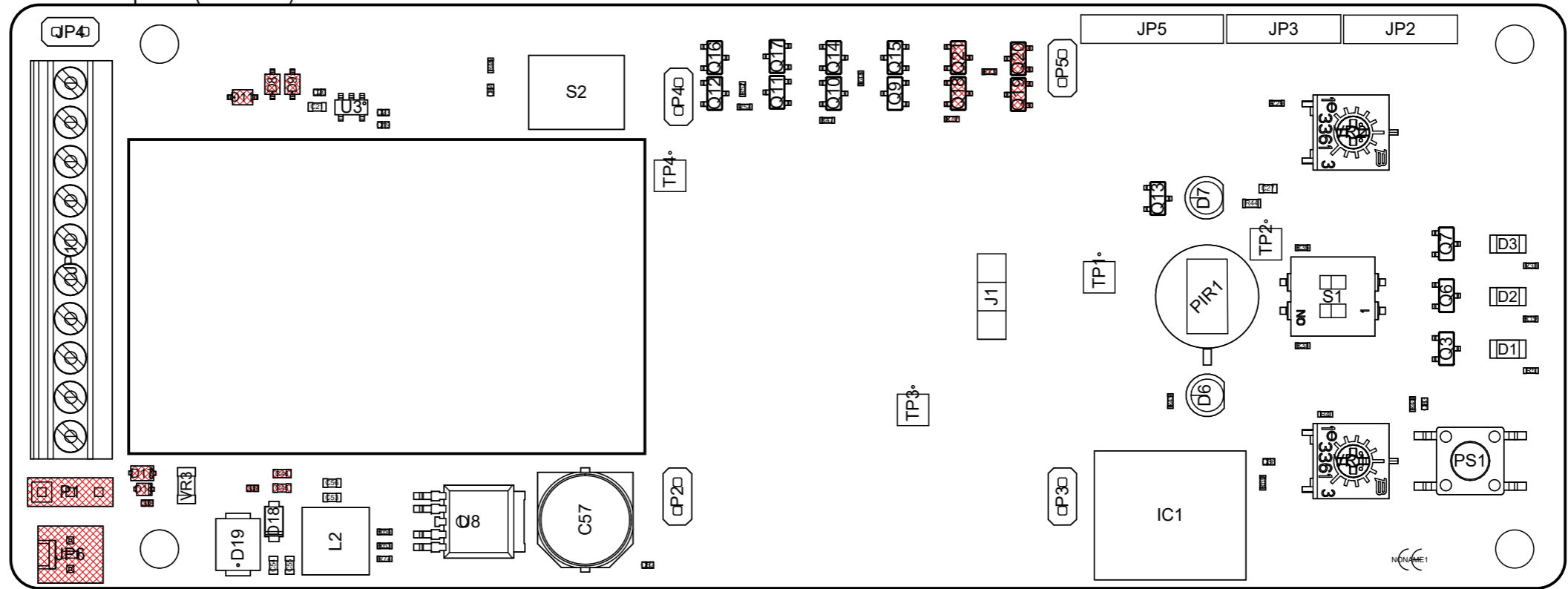


View from Bottom side (Scale 2:1)

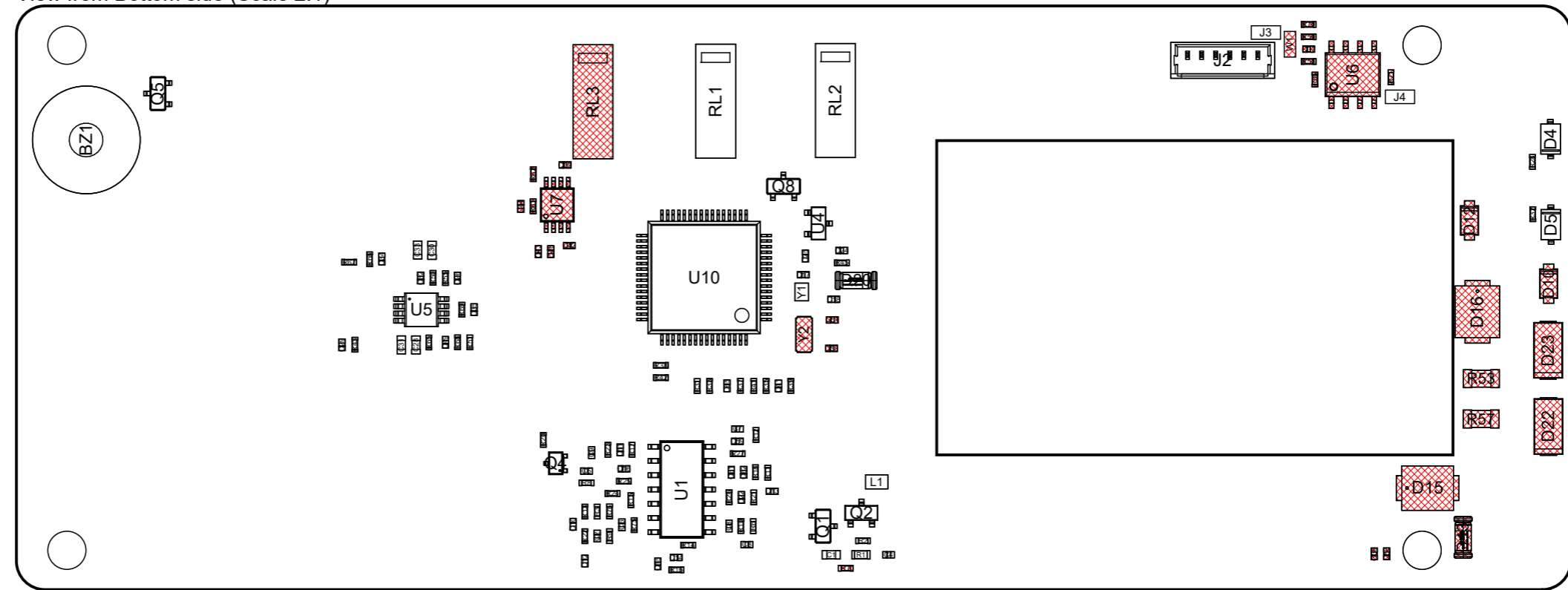


VARIANT "RS485"

View from Top side (Scale 2:1)

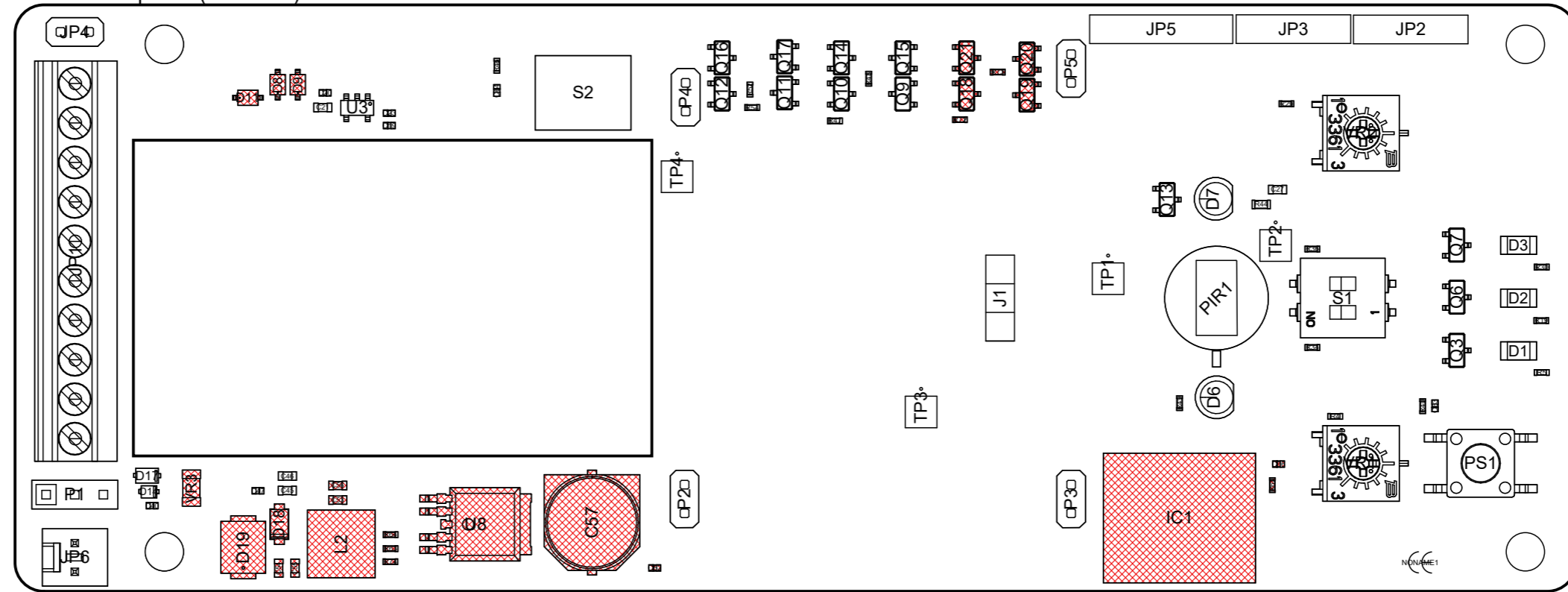


View from Bottom side (Scale 2:1)

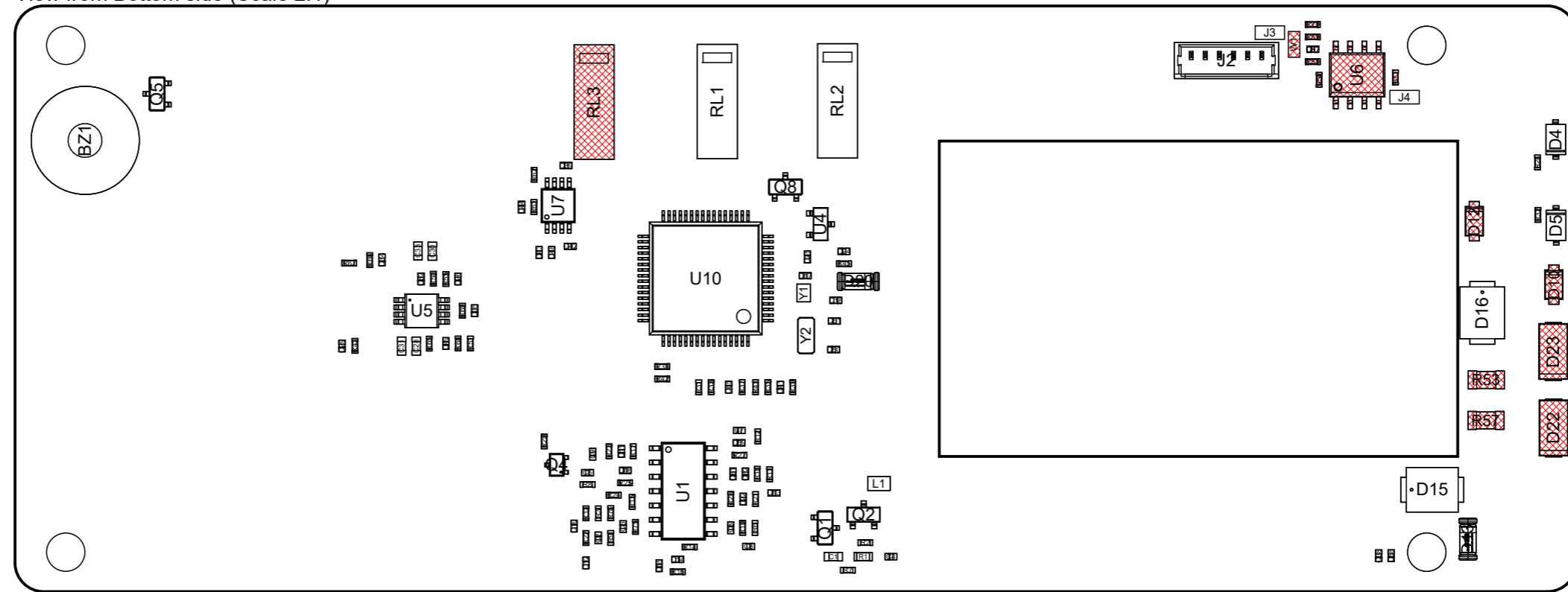


VARIANT "BLE"

View from Top side (Scale 2:1)



View from Bottom side (Scale 2:1)



VARIANT "WS"

A

B

C

D

E

F

G

H

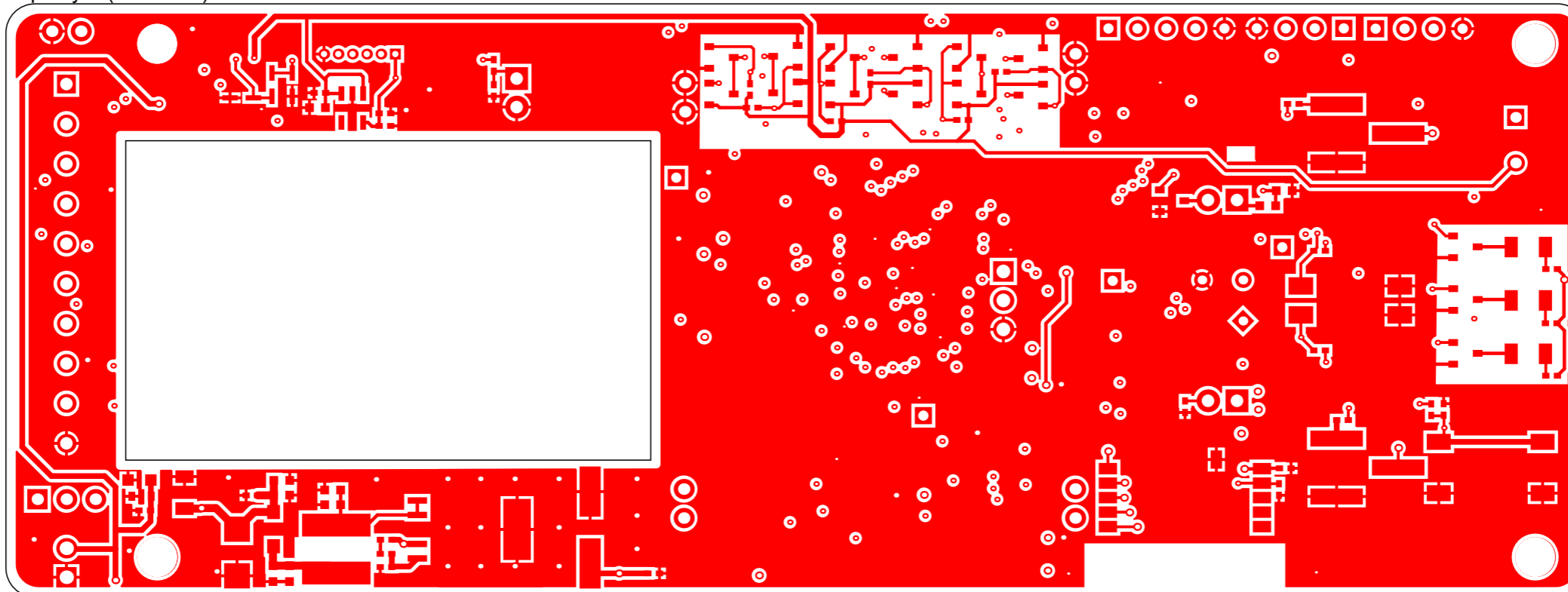
I

J

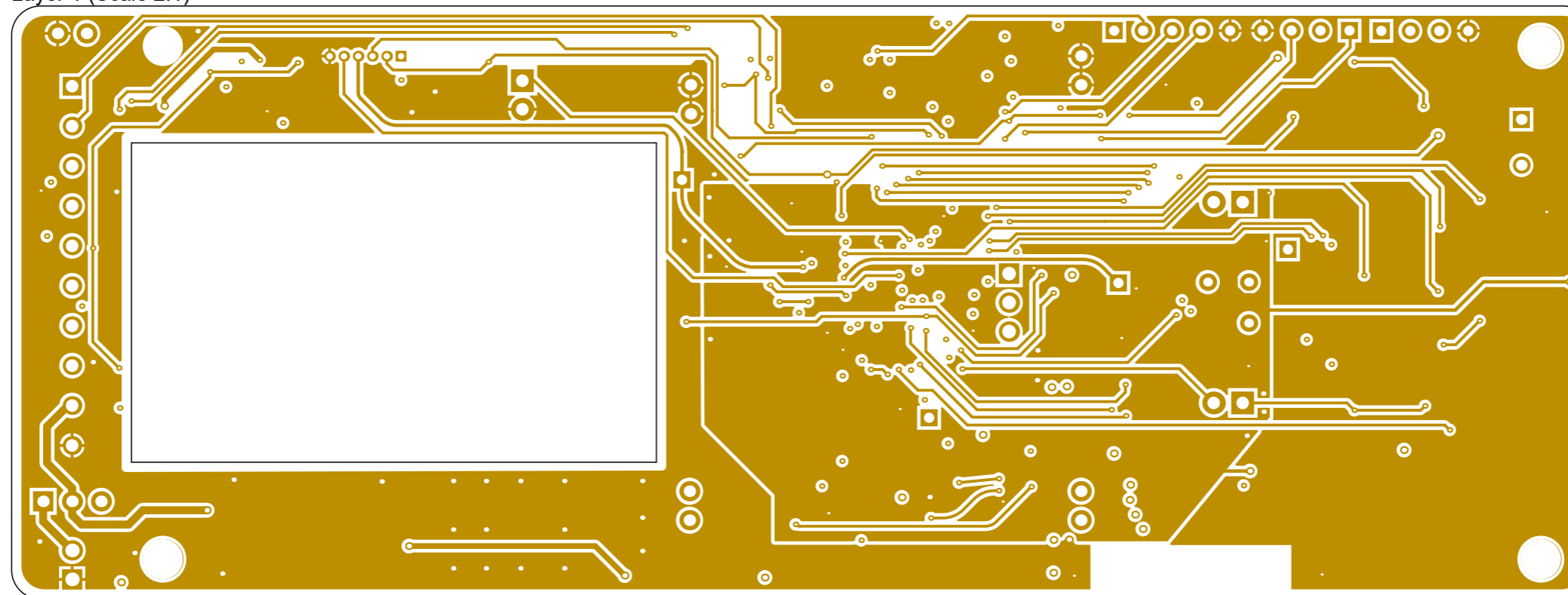
K

L

Top Layer (Scale 2:1)



Layer 1 (Scale 2:1)



1

2

3

4

5

6

7

8

A

B

C

D

E

F

G

H

I

J

K

L

1

2

3

4

5

6

7

8

A

B

C

D

E

F

G

H

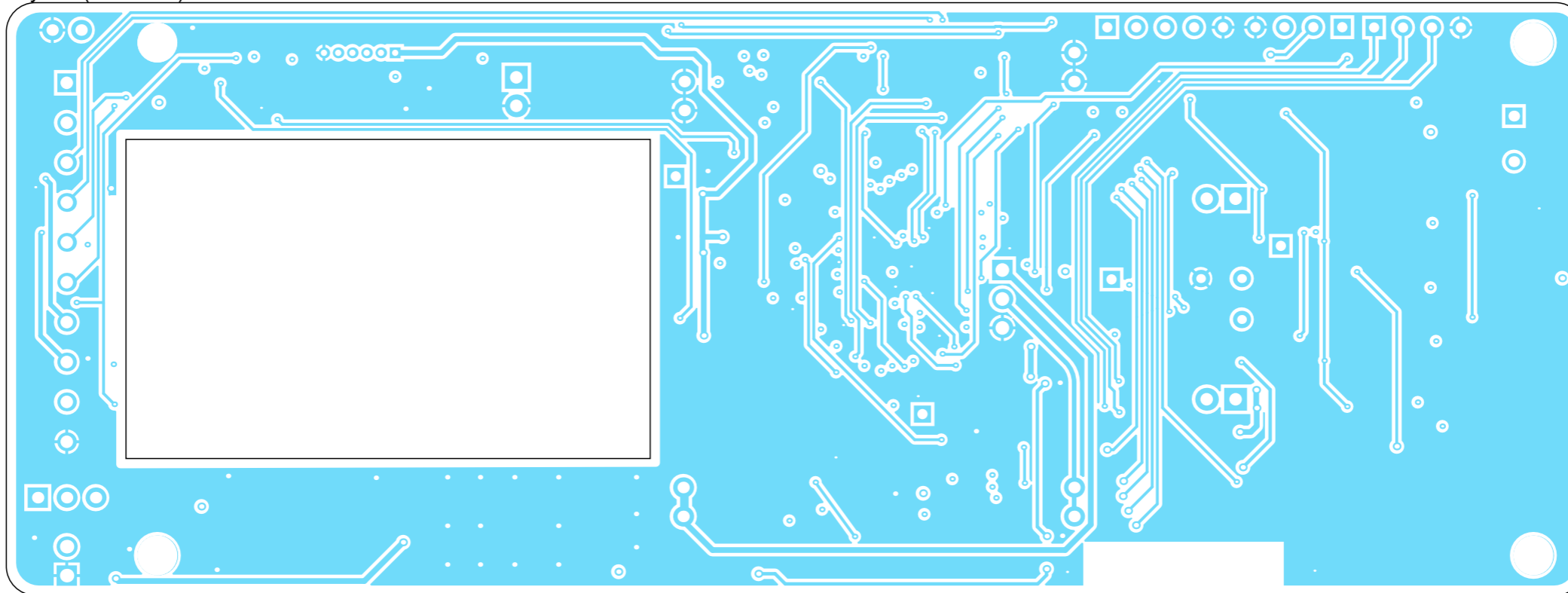
I

J

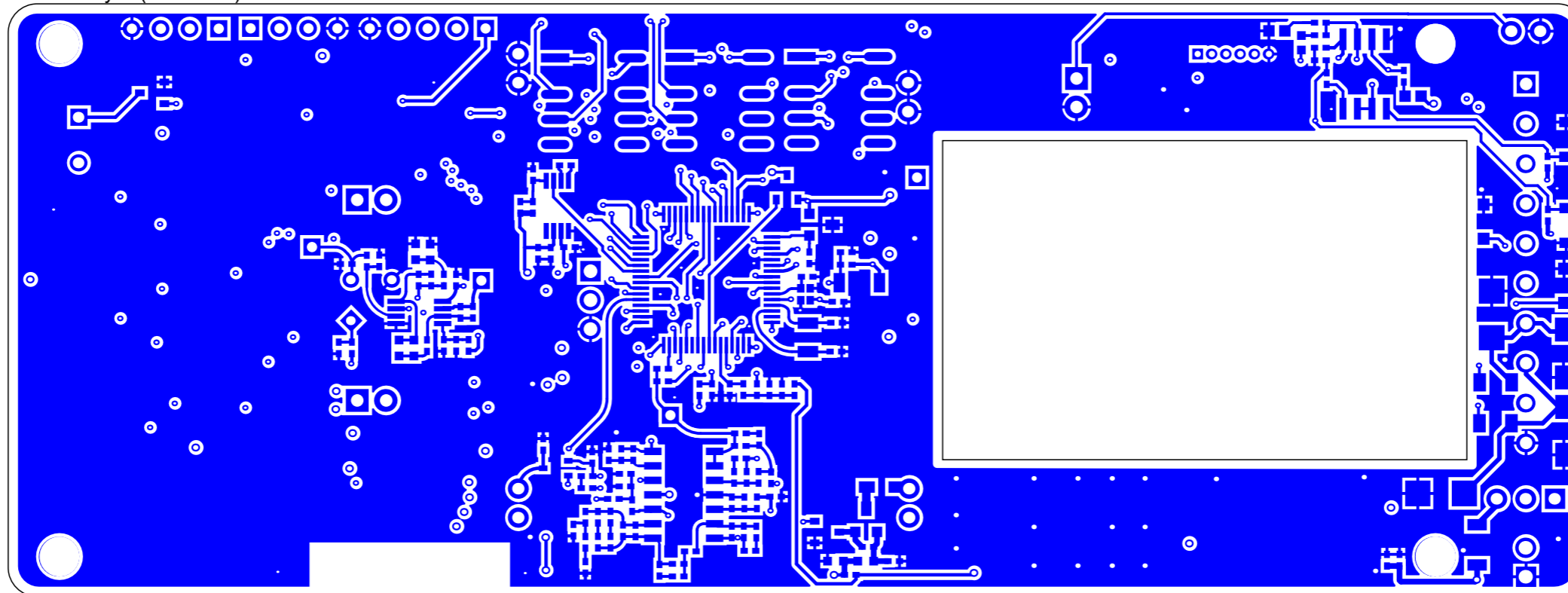
K

L

Layer 2 (Scale 2:1)



Bottom Layer (Scale 2:1)



A

B

C

D

E

F

G

H

I

J

K

L

1
2
3
4
5
6
7
8

1
2
3
4
5
6
7
8

A

B

C

D

E

F

G

H

I

J

K

L

1

1

2

2

3

3

4

4

5

5

6

6

7

7

8

8

Layer Stack Legend

Material	Layer	Thickness	Dielectric Material	Type	Gerber
	Top Overlay			Legend	GTO
Surface Material	Top Solder	0.01mm	Solder Resist	Solder Mask	GTS
Copper	Top Layer	0.04mm		Signal	GTL
Prepreg		0.07mm	PP-006	Dielectric	
CF-004	Layer 1	0.04mm		Signal	G1
		0.32mm	FR-4	Dielectric	
CF-004	Layer 2	0.04mm		Signal	G2
Prepreg		0.07mm	PP-006	Dielectric	
Copper	Bottom Layer	0.04mm		Signal	GBL
Surface Material	Bottom Solder	0.01mm	Solder Resist	Solder Mask	GBS
	Bottom Overlay			Legend	GBO

Total thickness: 0.62mm

A

B

C

D

E

F

G

H

I

J

K

L

1

1

Drill Table

Symbol	Count	Hole Size	Plated	Hole Tolerance
✕	180	0.20mm	Plated	
▽	61	0.40mm	Plated	
⊠	6	0.55mm	Plated	
☆	3	0.79mm	Plated	
▽	17	0.90mm	Plated	
✱	2	0.95mm	Plated	
⊞	13	1.02mm	Plated	
□	16	1.10mm	Plated	
◎	2	1.19mm	Plated	
⊕	3	1.20mm	Plated	
◇	4	3.50mm	Plated	
307 Total				

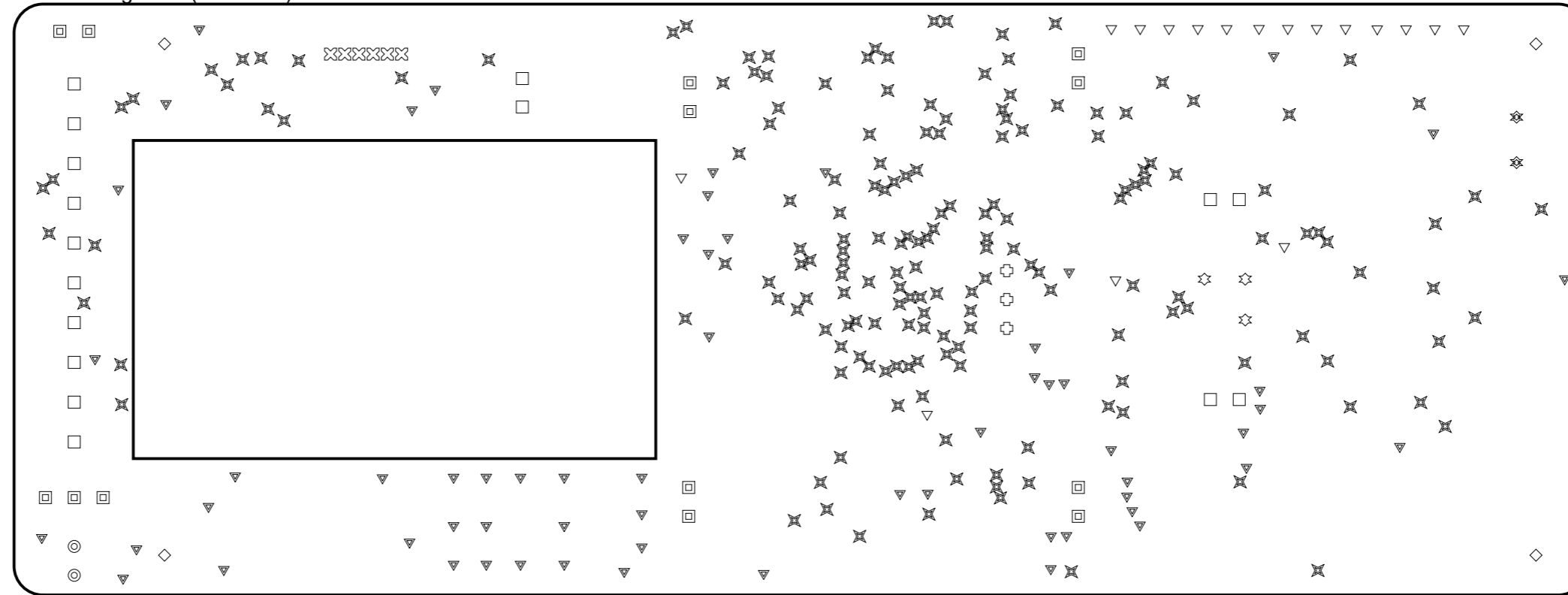
2

2

3

3

Drill Drawing View (Scale 2:1)



4

4

5

5

6

6

7

7

8

8

A

B

C

D

E

F

G

H

I

J

K

L

A

B

C

D

E

F

G

H

I

J

K

L

1

1

2

2

3

3

4

4

5

5

6

6

7

7

8

8

A

B

C

D

E

F

G

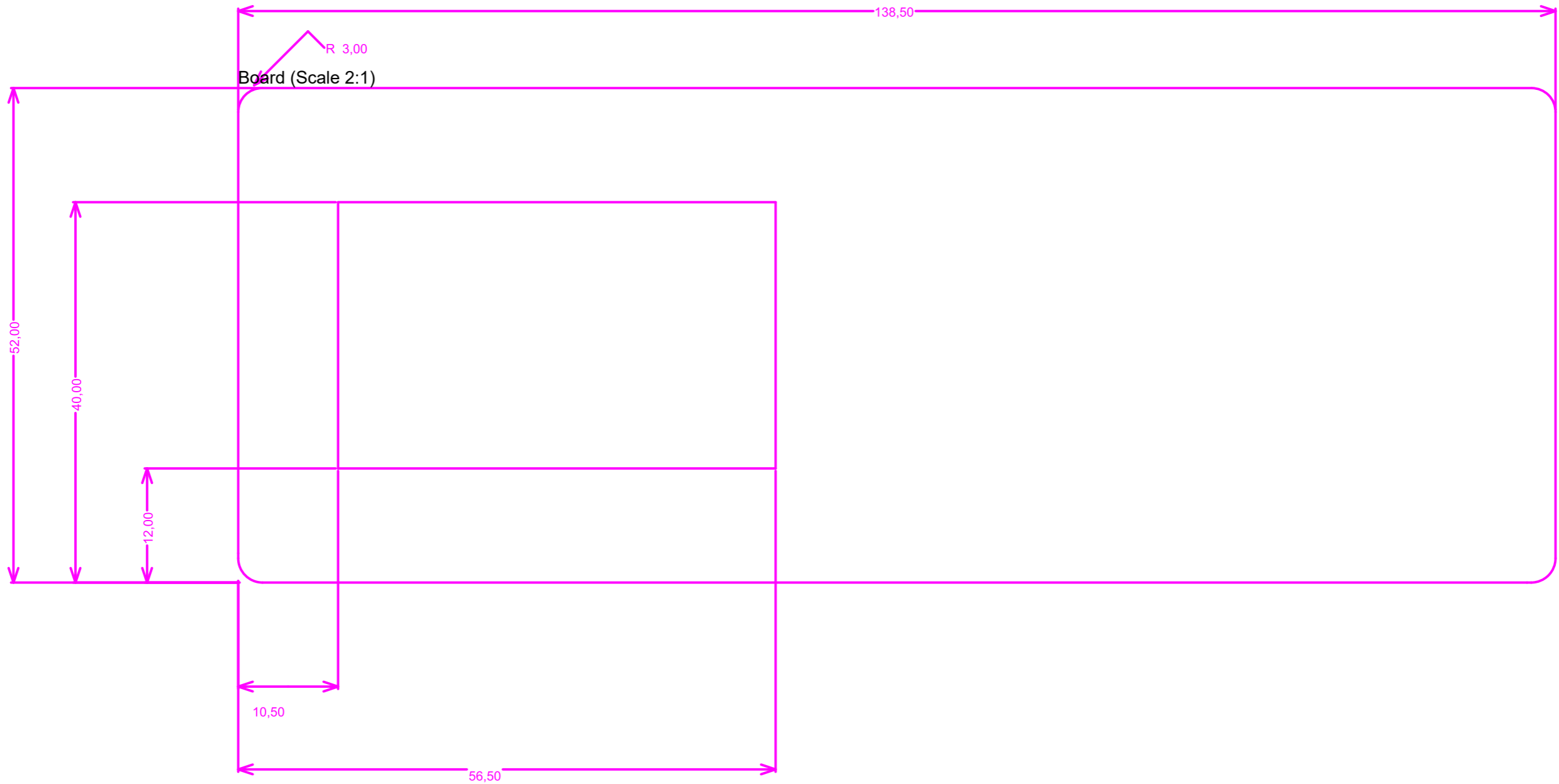
H

I

J

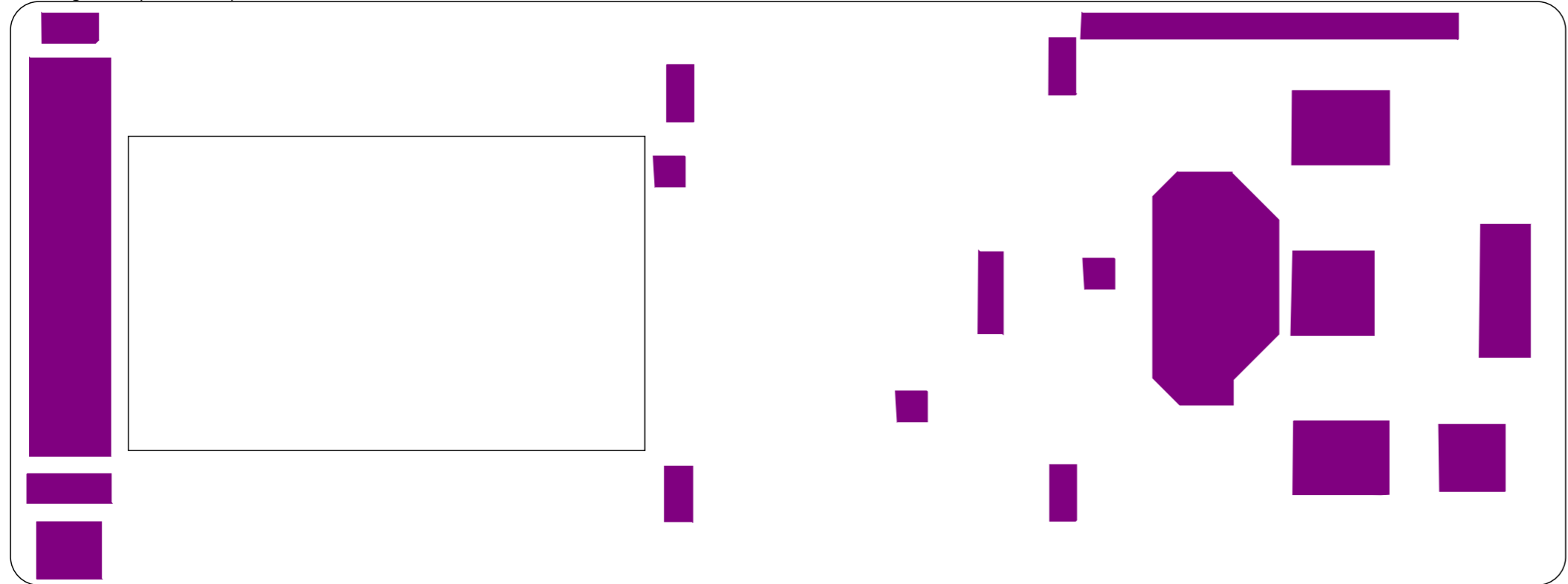
K

L

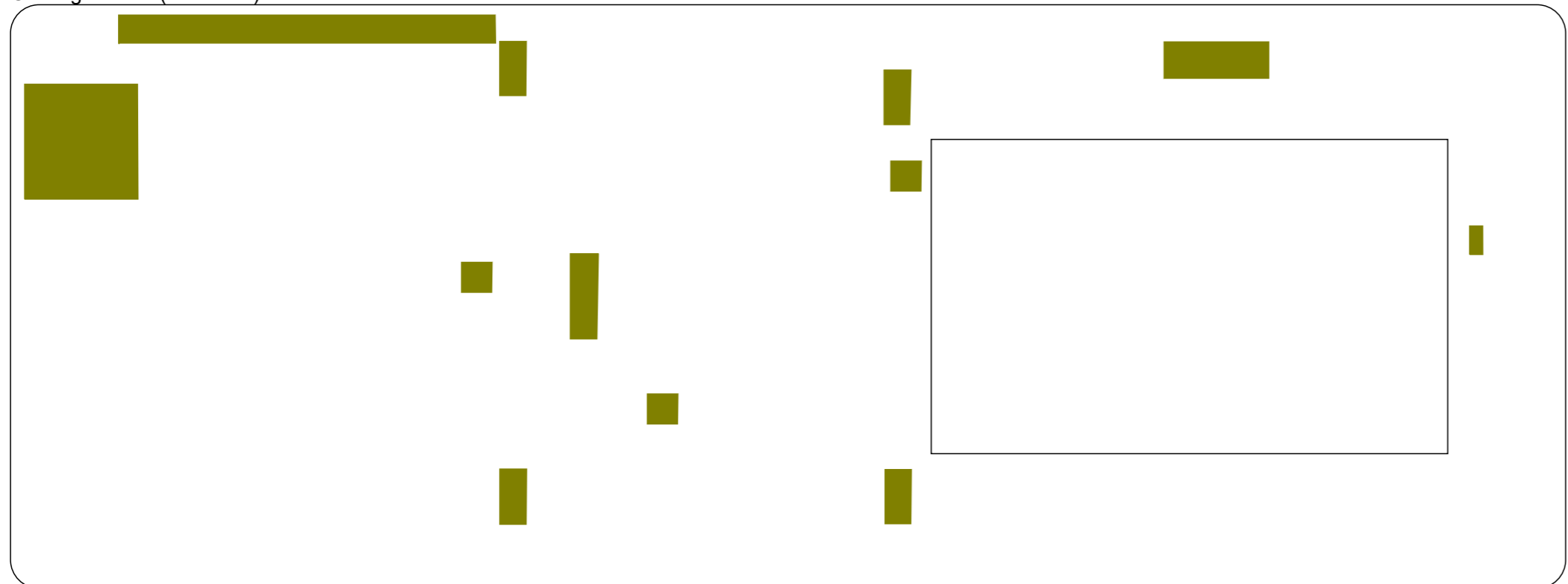


A B C D E F G H I J K L

Coating TOP (Scale 2:1)



Coating Bottom (Scale 2:1)



NO COATING AREAS

A B C D E F G H I J K L

1
2
3
4
5
6
7
8

1
2
3
4
5
6
7
8

A

B

C

D

E

F

G

H

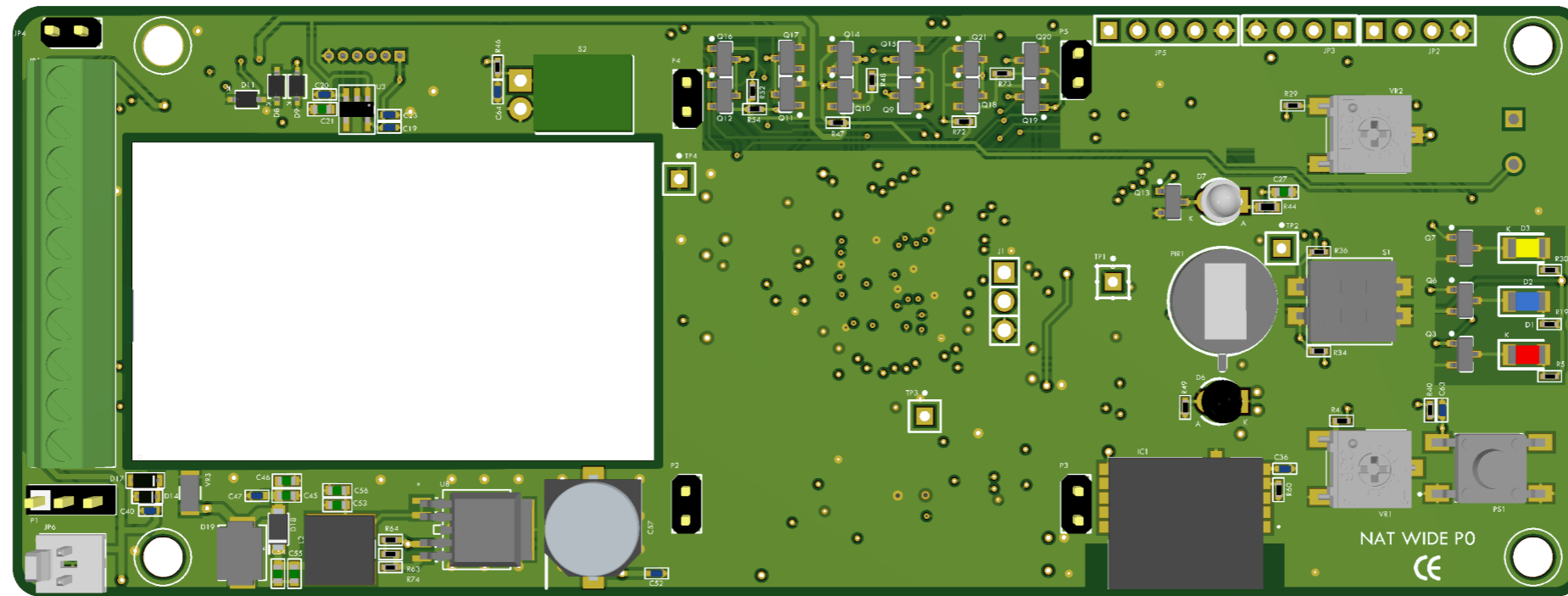
I

J

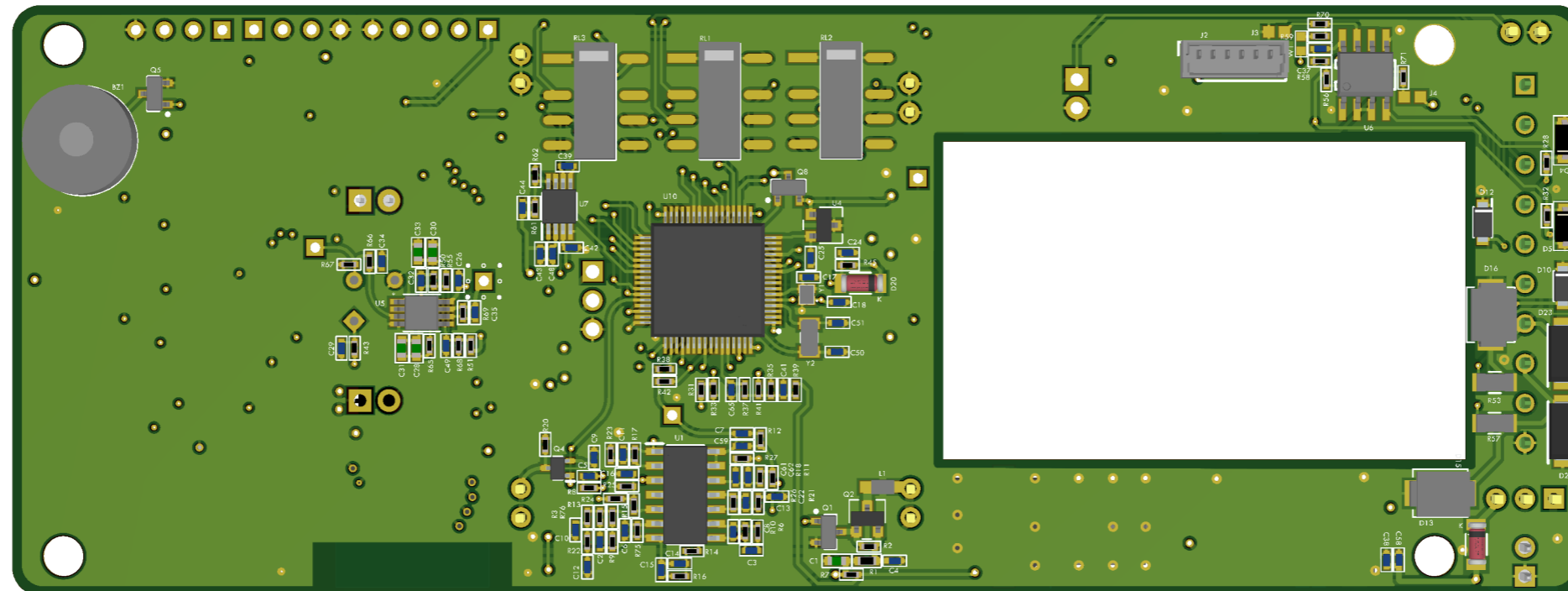
K

L

Realistic View



Realistic View



A

B

C

D

E

F

G

H

I

J

K

L

1

1

2

2

3

3

4

4

5

5

6

6

7

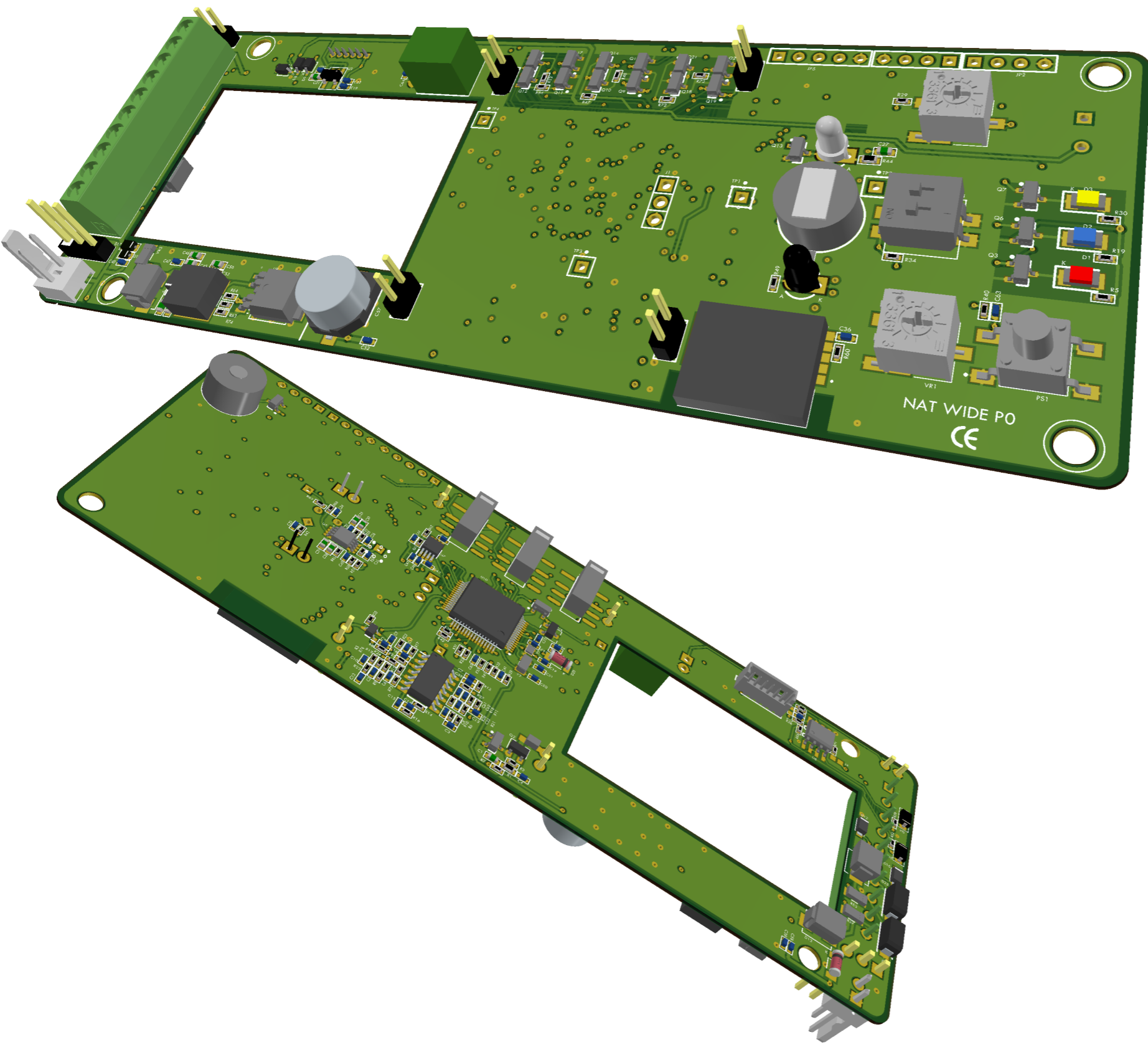
7

8

8

A B C D E F G H I J K L

1
2
3
4
5
6
7
8



1
2
3
4
5
6
7
8

A B C D E F G H I J K L